

49/135

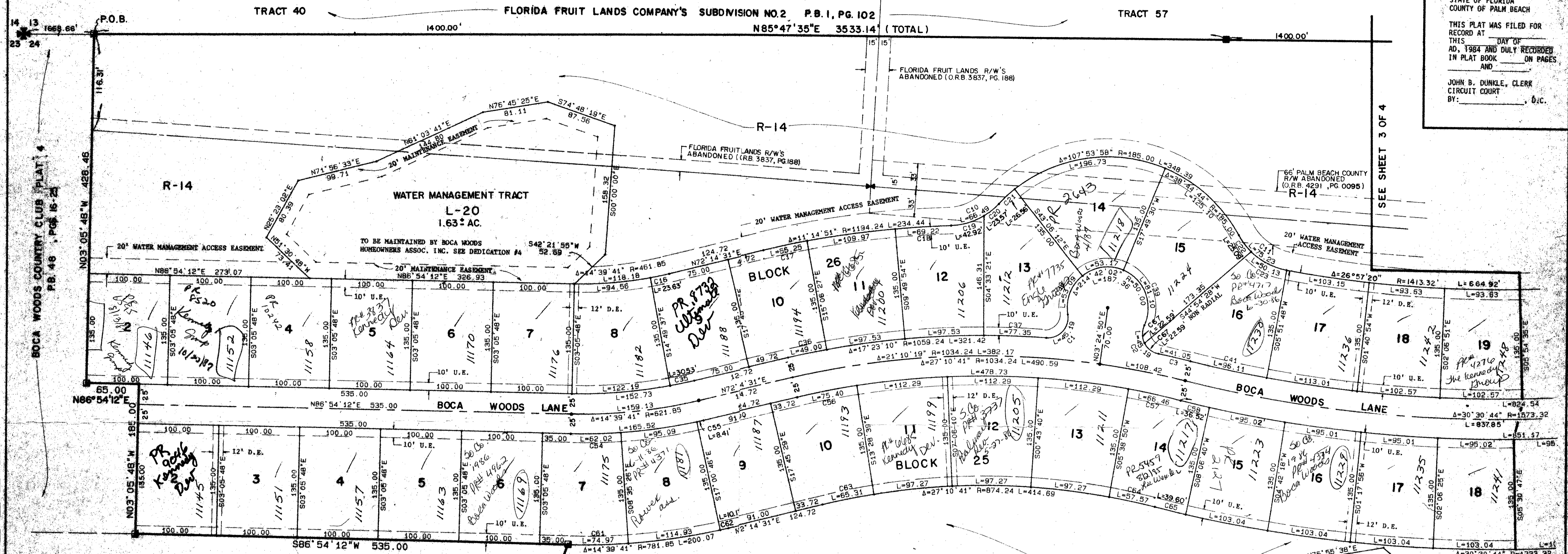
# BOCA WOODS COUNTRY CLUB PLAT 8

A PART OF BOCA WOODS COUNTRY CLUB, A P.U.D.  
SITUATE IN SECTIONS 13 AND 24, TOWNSHIP 47 SOUTH, RANGE 41 EAST,  
BEING A REPLAT OF A PORTION OF FLORIDA FRUIT LANDS COMPANY'S SUBDIVISION NO. 2  
PALM BEACH COUNTY, FLORIDA.

SHEET 2 OF 4

49/135

STATE OF FLORIDA  
COUNTY OF PALM BEACH  
THIS PLAT WAS FILED FOR  
RECORD AT  
THIS DAY OF  
AD, 1984 AND DULY RECORDED  
IN PLAT BOOK ON PAGES  
AND  
JOHN B. DUNKLE, CLERK  
CIRCUIT COURT  
BY: \_\_\_\_\_, D.C.

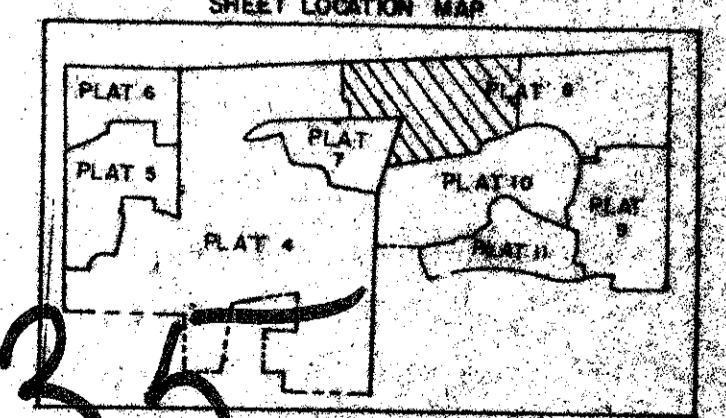


NO.	DELTA	RADIUS	LENGTH
C1	103°33'52"	25.00	45.19
C2	103°33'52"	25.00	45.19
C3	7°13'14"	1059.24	44.05
C4	101°51'14"	25.00	44.44
C5	88°44'26"	25.00	38.72
C6	48°14'23"	25.00	21.03
C7	48°14'23"	25.00	21.03
C8	44°49'06"	85.00	66.49
C9	50°42'26"	85.00	75.23
C10	12°18'12"	678.72	145.74
C11	41°21'10"	85.00	61.35
C12	43°23'33"	185.00	140.11
C13	70°12'47"	85.00	104.16
C14	2°55'52"	461.85	23.63
C15	2°39'03"	1184.24	55.25
C16	3°19'16"	1184.24	69.22
C17	20°58'56"	85.00	42.92
C18	15°59'09"	85.00	23.57
C19	8°13'32"	185.00	26.56
C20	16°54'47"	85.00	25.09
C21	33°47'39"	85.00	50.13
C22	3°26'41"	678.72	40.81
C23	31°13'43"	85.00	46.33
C24	10°07'27"	85.00	15.02
C25	31°49'55"	185.00	102.78
C26	52°21'29"	85.00	77.67
C27	50°07'15"	85.00	74.35
C28	1°57'28"	185.00	16.00
C29	2°39'03"	185.00	72.23
C30	6°44'40"	85.00	10.01
C31	63°28'07"	85.00	94.16
C32	1°58'49"	678.72	23.46
C33	2°05'52"	598.85	30.53
C34	2°39'03"	1059.24	45.00
C35	4°11'02"	1059.24	77.35
C36	80°49'59"	50.00	53.09
C37	92°36'20"	50.00	81.10
C38	3°13'14"	1059.24	44.05
C39	3°13'14"	1548.32	96.11
C40	10°20'27"	543.72	98.13
C41	84°51'25"	50.00	71.43
C42	56°02'34"	50.00	57.63
C43	70°07'58"	50.00	61.20
C44	2°38'05"	543.72	25.00

NO.	DELTA	RADIUS	LENGTH
C47	9°48'58"	543.72	93.15
C48	88°34'14"	50.00	77.29
C49	87°25'30"	50.00	58.84
C50	59°03'22"	50.00	51.54
C51	11°16'13"	543.72	106.95
C52	9°54'01"	543.72	93.95
C53	1°58'49"	543.72	18.79
C54	5°29'38"	646.85	62.02
C55	0°44'43"	646.85	8.41
C56	4°16'50"	1009.24	75.40
C57	3°46'23"	1009.24	66.46
C58	1°18'32"	1598.32	36.52
C59	1°57'18"	1598.32	54.54
C60	8°33'08"	493.72	56.46
C61	5°29'38"	781.85	74.97
C62	0°44'43"	781.85	10.17
C63	4°16'50"	874.24	65.31
C64	3°46'23"	874.24	57.57
C65	1°18'32"	1733.32	39.60
C66	5°33'08"	359.72	41.02
C67	5°46'57"	25.00	22.59
C68	27°29'49"	185.00	85.78
C69	11°03'32"	85.00	16.41
C70	1°57'18"	1733.32	59.15

BOCA WOODS COUNTRY CLUB  
PLAT 7  
P.B. 49, PGS 67-68

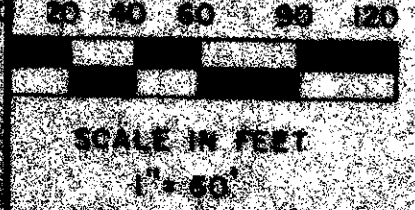
SUBDIVISION # Boca Woods C.C. # 8  
BOOK 49 PAGE 135  
FLOOD ZONE B FLOOD MAP # 100  
GRID # 67 ZIP CODE 334  
PUD NAME Boca Woods C.C.



49/135

Meridian  
Surveying and mapping inc.  
WEST PALM BEACH, FLORIDA

DRAWN M.E.H. DATE JAN. 1984  
CHECKED R.A.H. SCALE 1" = 60'  
DRAWING NO. 82-P-031  
BOCA WOODS COUNTRY CLUB  
PLAT 8



DRAWING NUMBER

DRAWING NUMBER

DRAWING NUMBER

SEE SHEET 3 OF 4

SEE SHEET 3 OF 4

UNPLATTED